

Miroma Place Hostel & Cummins and District Memorial Hospital Aged Care

Key Features Statement

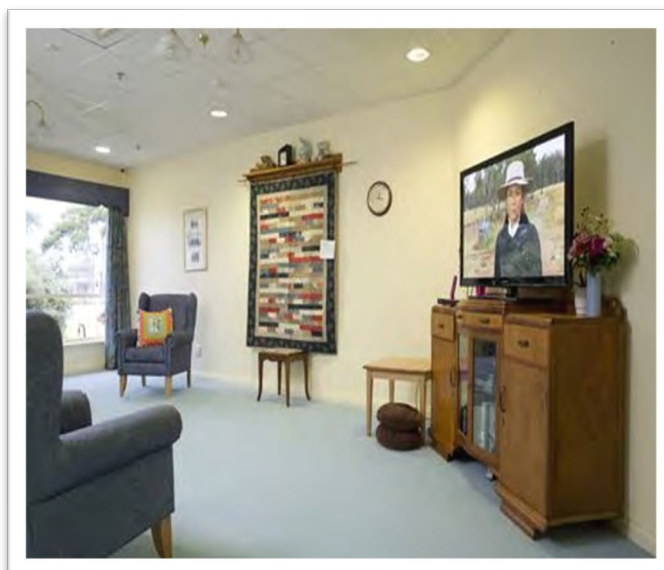
Eyre and Far North Local Health Network (EFNLHN) provides residential care services across the Eyre and Far North with facilities located in Ceduna, Cleve, Coober Pedy, Cowell, Cummins, Elliston, Kimba, Streaky Bay, Tumby Bay and Wudinna.

We are part of SA Health and provide a range of high-quality services that aim to enrich people's lives regardless of their health and support requirements, financial circumstances or lifestyle preferences.

At Cummins and District Memorial Hospital and Miroma Place Aged Care we have a dedicated team of compassionate, caring and highly professional individuals.

Our staff members and volunteers play an integral role in the health and wellbeing of residents by providing companionship and support and encouraging independence. We know that maintaining the link between family, friends and the local community enriches the quality of life of our care recipients.

Our goal is to provide quality care that celebrates a sense of self, family and community.



Location and access

Cummins is a quiet country township surrounded by scenic rural areas.

Cummins and District Memorial Hospital Aged Care is situated in a residential area on main road, with well-maintained roads and footpaths.

It is a single level Residential Aged Care Facility, offering a home-like atmosphere in open plan accommodation for singles and couples with landscaped gardens and surrounds.

Services

Cummins and District Memorial Hospital Aged Care provides permanent care, respite care, and ageing in place.

Cummins Multi-Purpose Service delivers high quality acute hospital care, residential aged care and community-based services to residents across a wide catchment area.

Cummins and District Memorial Hospital Aged Care includes the 14 bed Miroma Place Hostel and 8 aged care beds in the hospital.

They are staffed by Registered and Enrolled Nurses, care workers, maintenance officers, general services staff and administration staff. Most of our staff live in the local area and have been with us for many years, ensuring continuity of care. The staff take pride in providing compassionate and professional care.

24-hour support from a dedicated team of staff allows the service to offer ageing in place.

Being co-located with the hospital provides ready access to medical care.

In addition to our comprehensive clinical care programs, we offer allied health, social worker, chaplain visits, oral hygiene check-ups, Medicare, on-site access to GP, pharmacy, incontinence products and toiletries, entertainment, volunteer program, mobile library, electrical appliance testing, postal service, gardening assistance, arrangements for room telephone connections

Meals are prepared and cooked onsite daily and there is a rotating menu. We pride ourselves on the quality of our meals and the commitment of our kitchen staff.

Cummins MPS is located approximately 1 kilometre from the town's shopping and recreational facilities.

Cummins MPS is strongly supported by the local community and has strong links with local community organisations, churches and businesses, and our staff, volunteers and residents participate in community events.

Leisure and wellbeing

EFNLHN caters for residents from diverse cultural backgrounds and our lifestyle program is designed to celebrate this diversity. Our adaptive and flexible program is also tailored to the needs of residents with dementia and other health issues.

Our program includes group and individual activities, designed around what residents like to do. We have a great group of volunteers who assist with our leisure and lifestyle program.

Residents are encouraged to maintain community links and are assisted to attend offsite meetings with groups such as Lions and Senior Citizens. As part of our intergenerational program, local schools and kindergartens celebrate events with residents.

Communal areas

Miroma Place Hostel rooms have access to communal lounge and dining facilities, and communal courtyard and gardens. Everyone is encouraged to get involved in maintaining the garden areas.

The Cummins Hospital Aged care rooms have access to communal lounge and dining facilities.

Fees and payments

The Eyre and Far North Local Health Network does not determine aged care fees. The standard fee is determined by the Department of Health, with Services Australia (Centrelink) or Department of Veterans' Affairs being responsible for assessing individual fees that apply.

The Australian Government subsidises a range of aged care costs in Australia, but residents with the means must contribute to the cost of their care and accommodation. This may require one off lump-sum payment or deposit, as well as ongoing fees for your care, accommodation, and daily living expenses.

At Cummins MPS you may be required to pay one or more of the following residential care fees:

- **A basic daily fee (standard fee)** – all residents are required to pay a basic daily care fee. The fee is indexed at 85% of a standard Aged Pension and changes on 20 March and 20 September each year when the pension is reviewed.
- **Accommodation payment** – not all residents pay an accommodation payment or contribution, only those that have assets above the asset free threshold as detailed in the residential aged care fee schedule. Those residents assessed to pay an accommodation payment have three options for payment:
 - i. Refundable Accommodation Deposit (RAD) – a lump sum refundable payment; or
 - ii. Daily Accommodation Payment (DAP) – the daily equivalent you pay if you elect not to pay a RAD; or
 - iii. Combination – a part RAD and part DAP. A combination example is noted on the fee schedule; however, a resident can choose the amount that suits their financial needs. The Aged Care Liaison Officer (ACLO) can assist in providing RAD/DAP payment scenarios.

Pages 4-5 provide an overview of the rooms available at Cummins MPS and the applicable RAD.

Means Tested Care Fee (MTCF) – This is an additional contribution towards the cost of care and not all people that move into aged care will be required to pay it. The government will advise of this fee, if applicable, following the asset and income assessment. Annual and lifetime caps apply to means tested care fees.

Payment of fees – fees are invoiced fortnightly in arrears. The preferred method of payment is direct debit, and a direct debit request form (DDR) will be provided for completion.

The Aged Care Liaison Officer (ACLO) for Eyre and Far North Local Health Network will work with each prospective resident and / or their nominated representative to provide an estimate of the fees and accommodation charges as well as provide the required documentation for permanency. The ACLO can be contacted on 0467 777 215.

You can also find a fee estimator on the My Aged Care website – www.myagedcare.gov.au/estimate-fees-for-aged-care-services

NB: Eyre and Far North Local Health Network is not a financial advisor and therefore unable to provide financial planning advice. It is recommended you speak to your own financial advisor / seek independent financial advice prior to admission to aged care.

Cummins Hospital Aged Care

| | |
|---|--|
| Room type | Single room with private ensuite |
| Room size | 17-20m ² |
| Room numbers | 3-5, 7 |
| Refundable Accommodation Deposit (RAD) | \$360,000 |
| Features and amenities | Single room with ensuite, reverse cycle air-conditioning, built-in storage and Wi-Fi access. |

| | |
|---|--|
| Room type | Shared room with ensuite |
| Room size | 29m ² |
| Room numbers | 6 |
| Refundable Accommodation Deposit (RAD) | \$320,000 |
| Features and amenities | Shared room with ensuite, reverse cycle air-conditioning, built-in storage and Wi-Fi access. |

| | |
|---|--|
| Room type | Single room shared ensuite |
| Room size | 14-15m ² |
| Room numbers | 1-2 |
| Refundable Accommodation Deposit (RAD) | \$360,000 |
| Features and amenities | Single room with shared ensuite, reverse cycle air-conditioning, built-in storage and WiFi access. |

Miroma Place Hostel

| | |
|---|--|
| Room type | Single room with private ensuite |
| Room size | 16-17m ² |
| Room numbers | 1-14 |
| Refundable Accommodation Deposit (RAD) | \$360,000 |
| Features and amenities | Single room with ensuite, reverse cycle air-conditioning, built-in storage and Wi-Fi access. |

For more information

Eyre and Far North Local Health Network
 Cummins and District Memorial Hospital Aged Care
 21 Tumby Bay Road
 CUMMINS SA 5631
 Telephone: (08) 8676 0201

sahealth.sa.gov.au/eyreandfarnorthlhn

 Follow us at: facebook.com/EFNLHN

OFFICIAL
 © Eyre and Far North Local Health Network, Government of South Australia.
 All rights reserved.

Key Features Statement – Cummins MPS



Health
 Eyre and Far North
 Local Health Network

Residential Aged Care Fee Schedule

Basic Daily Fee (including respite) – effective 20 March 2026

The maximum basic daily fee for residents entering aged care (including respite) is \$66.80 per day.

Accommodation Payment – effective 1 April 2026 – 30 June 2026

| Refundable Accommodation Deposit (RAD) | Daily Accommodation Payment (DAP) | Combination Payment Example RAD 50% | Combination Payment Example DAP 50% |
|--|-----------------------------------|-------------------------------------|-------------------------------------|
| \$390,000 | \$85.05 | \$195,000 | \$45.52 |
| \$360,000 | \$78.50 | \$180,000 | \$39.25 |
| \$320,000 | \$69.78 | \$160,000 | \$34.89 |
| \$280,000 | \$61.06 | \$140,000 | \$30.53 |
| \$250,000 | \$54.52 | \$125,000 | \$27.26 |

Maximum Permissible Interest Rate (MPIR) – effective 1 April 2026


The current MPIR is 7.96%

Asset Thresholds

| Asset Threshold | Rate |
|-----------------------|--------------|
| Asset Free Threshold | \$64,500.00 |
| First Asset Threshold | \$214,884.00 |

For more information

Eyre and Far North Local Health Network
 Aged Care Liaison Officer
 Telephone: 0467 777 215
sahealth.sa.gov.au/eyreandfarnorthlhn

 Follow us at: facebook.com/EFNLHN

OFFICIAL
 © Eyre and Far North Local Health Network, Government of South Australia.
 All rights reserved.

