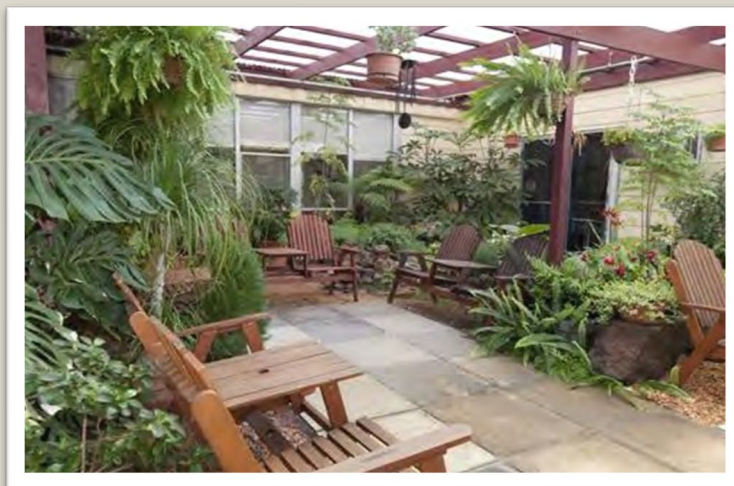


Country Health Connect Key Features Statement Mallee - Karoonda MPS

(MPS - Multi Purpose Service facilities)

Riverland Mallee Coorong Local Health Network Incorporated



Riverland Mallee Coorong Local Health Network Inc (RMC LHN) provides a range of residential care services under the brand of Country Health Connect. We are part of SA Health and provide a range of high quality services that aim to enrich people's lives regardless of their health and support requirements, financial circumstances or lifestyle preferences.

At Mallee – Karoonda MPS, we have a dedicated team who are compassionate, caring and highly professional individuals. Our staff members and volunteers play an integral role in the health and wellbeing of clients by providing companionship and support and encouraging independence. We know that maintaining the link between family, friends and the local community enriches the quality of life of our consumers.

Our goal is to provide quality care that celebrates a sense of self, family and community. RMC LHN has aged care facilities across regional South Australia located in the Riverland (at Barmera, Loxton, Renmark and Waikerie), in the Mallee (at Karoonda, Lameroo, Mannum and Pinnaroo), and in the Coorong (at Meningie and Tailem Bend).



**COUNTRY
HEALTH
CONNECT**

Country Health Connect Riverland Mallee Coorong
Mallee – Karoonda MPS – Mallee Health Service
13 Stokes Road, Karoonda SA 5307
(08) 8579 1111
Email: Health.CHSA-AgedCareLiaisonOfficers@sa.gov.au



Government
of South Australia

SA Health

Room Type	Single Room with Private Ensuite
Refundable Accommodation Deposit (RAD)	\$350,000 (Price Category 2)
Daily Accommodation Payment (DAP)	\$47.94 per day
Explanation of payment options	<p>Consumers can choose to pay for their accommodation by a Refundable Accommodation Deposit (RAD), a Daily Accommodation Payment (DAP) or a combination of both.</p> <p>A RAD is paid as a lump sum amount.</p> <p>A DAP accrues daily and is paid fortnightly.</p> <p>A combination payment includes both a partial lump sum and daily payments.</p>
Example of combination payment	<p>An example based on 50% RAD and 50% DAP would be:</p> <p>\$175,000 RAD plus an ongoing DAP of \$23.97 per day.</p>
Maximum Permissible Interest Rate (MPIR)	The current maximum permissible interest rate is 5.00% as at 1 July 2022.
Other Fees & Charges	<p>All consumers are required to pay a basic daily care fee.</p> <p>Means Tested Care Fee (MTCF) – May be applicable as determined by the Department of Human Services</p>
Features and Amenities	Rooms in this category within Mallee – Karoonda MPS feature single bedrooms with private ensuite, reverse cycle air-conditioning, built in robes, vinyl flooring, bedside cabinet, telephone point and courtyard access.
Additional services at additional cost	N/A
Rooms offered on an extra services basis?	No

Room Information	Description	Room Size (m ²)	Room Numbers	Price Category	Maximum Occupancy per Room
Kadistra Karoonda	> Single Room > Shared Ensuite	15-17	1-8	2	1
Karoonda	> Single room > Shared ensuite	15-17	3-6	2	2



**COUNTRY
HEALTH
CONNECT**

Country Health Connect Riverland Mallee Coorong
Mallee – Karoonda MPS – Mallee Health Service
13 Stokes Road, Karoonda SA 5307
(08) 8579 1111
Email: Health.CHSA-AgedCareLiaisonOfficers@sa.gov.au



Government
of South Australia

SA Health

Room Type	Shared Room with Shared Ensuite
Refundable Accommodation Deposit (RAD)	\$280,000 (Price Category 4)
Daily Accommodation Payment (DAP)	\$38.35 per day
Explanation of payment options	<p>Consumers can choose to pay for their accommodation by a Refundable Accommodation Deposit (RAD), a Daily Accommodation Payment (DAP) or a combination of both.</p> <p>A RAD is paid as a lump sum amount.</p> <p>A DAP accrues daily and is paid fortnightly.</p> <p>A combination payment includes both a partial lump sum and daily payments.</p>
Example of combination payment	<p>An example based on 50% RAD and 50% DAP would be:</p> <p>\$140,000 RAD plus an ongoing DAP of \$19.17 per day.</p>
Maximum Permissible Interest Rate (MPIR)	The current maximum permissible interest rate is 5.00% as at 1 July 2022.
Other Fees & Charges	<p>All consumers are required to pay a basic daily care fee.</p> <p>Means Tested Care Fee (MTCF) – May be applicable as determined by the Department of Human Services</p>
Features and Amenities	Rooms in this category within Mallee – Karoonda MPS features shared bedrooms with shared ensuite, reverse cycle air-conditioning, built in robes, vinyl flooring, bedside cabinet and phone point.
Additional services at additional cost	N/A
Rooms offered on an extra services basis?	No

Room Information	Description	Room Size (sqm)	Room Numbers	Price Category	Maximum Occupancy per Room
Karoonda	<ul style="list-style-type: none"> > Shared room > Shared ensuite 	19-21	7-13	4	2



**COUNTRY
HEALTH
CONNECT**

Country Health Connect Riverland Mallee Coorong
Mallee – Karoonda MPS – Mallee Health Service
13 Stokes Road, Karoonda SA 5307
(08) 8579 1111
Email: Health.CHSA-AgedCareLiaisonOfficers@sa.gov.au



Government
of South Australia
SA Health

Communal Areas

Mallee - Karoonda MPS has access to two communal lounge rooms, dining rooms with courtyard access. Large screen television, piano and reverse cycle air conditioning. The garden area features a pond, water feature and attractive seating. The communal areas are in average condition.

Services

Permanent Care, Respite Care, Dementia Specific Care, Ageing in Place

Mallee – Karoonda MPS provides a high standard of residential care.

In addition to our comprehensive clinical care programs, we offer scheduled visits by a General Practitioner, Pharmacist, Physiotherapist and Podiatrist. Video conference facilities are also in place for appointments with specialists and Public Trustee (for example) as required.

There are onsite religious services and a practitioner visits regularly to provide emotional and spiritual support to consumers and families. A meditation room is available.

Meals are prepared and cooked onsite daily, complimented by a rotating menu.

Mallee – Karoonda MPS is strongly supported by the local community and has strong links with the local community, organisations, churches and businesses.

Our staff, volunteers and consumers participate in community events such as the Christmas Pageant and Carols, Field Days, Annual Show and ANZAC day.

A dedicated team of staff provide 24 hour support. Most of our staff live in the local area and have been with us for many years, ensuring continuity of care. Staff take pride in providing compassionate and professional care.

Location/Access

Mallee – Karoonda MPS is situated on Stokes Road in the township of Karoonda, and is co-located with the Hospital, ensuring ready access to medical care. Mallee – Karoonda MPS is located within the town centre and is close to the towns shopping and recreational facilities, which features commerce, well maintained roads and reasonable footpaths.

Karoonda is a quiet country township situated 145 kilometers from Adelaide on the Mallee Highway B12. It is 144 kilometers from Loxton in the Riverland. It is surrounded by a beautiful greened lawn area. Karoonda is an important farming region for wheat and sheep. The big merino ram is a valued symbol of the town that sits near the railways yards to highlight the importance of sheep farming in the district.

Mallee - Karoonda MPS is a single level Residential Care Facility offering a home-like atmosphere in open plan accommodation for singles and couples. It has parking available at the front of the hospital and rear of the aged care facility. It has disabled access.

Leisure & Well-Being

Mallee – Karoonda MPS caters for consumers from diverse cultural backgrounds and our Leisure & Well-Being Program is designed to celebrate this diversity. Our adaptive and flexible program is also tailored to the needs of consumers with dementia and other health issues.

Consumers are encouraged to maintain community links and are assisted to attend offsite meetings. There is a qualified diversional therapist who hosts a variety of activities for the consumers, including special celebrations, guest entertainers, excursions, games and family get togethers.

Rates

The quoted Room Price is per person.

Rates quoted are valid as at 1 July 2022, and are subject to change.

This replaces any previous versions.



**COUNTRY
HEALTH
CONNECT**

Country Health Connect Riverland Mallee Coorong
Mallee – Karoonda MPS – Mallee Health Service
13 Stokes Road, Karoonda SA 5307
(08) 8579 1111
Email: Health.CHSA-AgedCareLiaisonOfficers@sa.gov.au



Government
of South Australia
SA Health