

# Country Health Connect

## Key Features Statement

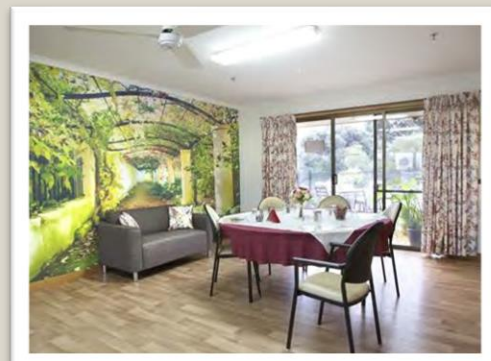
### Midwest Health & Aged Care Inc - Streaky Bay Multipurpose Service (MPS)

**Eyre and Far North Local Health Network Inc**

Eyre and far North Local Health Network (EFN LHN) provides a range of residential care services under the brand of Country Health Connect. We are part of SA Health and provide a range of high quality services that aim to enrich people's lives regardless of their health and support requirements, financial circumstances or lifestyle preferences.

At Midwest Health & Aged Care Streaky Bay MPS, we have a dedicated team who are compassionate, caring and highly professional individuals. Our staff members and volunteers play an integral role in the health and wellbeing of residents by providing companionship and support and encouraging independence. We know that maintaining the link between family, friends and the local community enriches the quality of life of our care recipients.

Our goal is to provide quality care that celebrates a sense of self, family and community. EFN LHN has aged care facilities across regional South Australia located in – Ceduna, Cleve, Coober Pedy, Cowell, Cummins, Elliston, Kimba, Streaky Bay, Tumby Bay and Wudinna.



**COUNTRY  
HEALTH  
CONNECT**

Country Health Connect Eyre & Far North  
Midwest Health & Aged Care Inc – Streaky Bay MPS  
3 Flinders Drive, Streaky Bay SA 5680  
(08) 8626 1490  
Email: [Health.CHSA-AgedCareLiaisonOfficers@sa.gov.au](mailto:Health.CHSA-AgedCareLiaisonOfficers@sa.gov.au)

Room Type	Single Room with Private Ensuite
Refundable Accommodation Deposit (RAD)	\$280,000 (Price Category 4)
Daily Accommodation Payment (DAP)	\$62.67 per day
Explanation of payment options	<p>Residents can choose to pay for their accommodation by a Refundable Accommodation Deposit (RAD), a Daily Accommodation Payment (DAP) or a combination of both.</p> <p>A RAD is paid as a lump sum amount.</p> <p>A DAP accrues daily and is paid fortnightly.</p> <p>A combination payment includes both a partial lump sum and daily payments.</p>
Example of combination payment	<p>An example based on 50% RAD and 50% DAP would be:</p> <p>\$140,000 RAD plus an ongoing DAP of \$31.33 per day.</p>
Maximum Permissible Interest Rate (MPIR)	The current maximum permissible interest rate is 8.17% as at 1 April 2025.
Other Fees & Charges	All residents are required to pay a basic daily care fee.
Features and Amenities	Rooms in this category feature Single rooms with ensuite, reverse cycle air-conditioning, built in storage, sink unit, courtyard access, Television, tallboy, wardrobe, bedside cabinet and WIFI access.
Additional services at additional cost	N/A
Rooms offered on an extra services basis?	No

Room Information	Description	Room Size (m2)	Room Numbers	Price Category	Maximum Occupancy per Room
Elmhaven Residence	Single room Ensuite	14-15	1 – 15	4	1



**COUNTRY  
HEALTH  
CONNECT**

Country Health Connect Eyre & Far North  
Midwest Health & Aged Care Inc – Streaky Bay MPS  
3 Flinders Drive, Streaky Bay SA 5680  
(08) 8626 1490  
Email: [Health.CHSA-AgedCareLiaisonOfficers@sa.gov.au](mailto:Health.CHSA-AgedCareLiaisonOfficers@sa.gov.au)

Room Type	Single Room with Shared Ensuite
Refundable Accommodation Deposit (RAD)	\$280,000 (Price Category 4)
Daily Accommodation Payment (DAP)	\$62.67 per day
Explanation of payment options	<p>Residents can choose to pay for their accommodation by a Refundable Accommodation Deposit (RAD), a Daily Accommodation Payment (DAP) or a combination of both.</p> <p>A RAD is paid as a lump sum amount.</p> <p>A DAP accrues daily and is paid fortnightly.</p> <p>A combination payment includes both a partial lump sum and daily payments.</p>
Example of combination payment	<p>An example based on 50% RAD and 50% DAP would be:</p> <p>\$140,000 RAD plus an ongoing DAP of \$31.33 per day.</p>
Maximum Permissible Interest Rate (MPIR)	The current maximum permissible interest rate is 8.17% as at 1 April 2025.
Other Fees & Charges	All residents are required to pay a basic daily care fee.
Features and Amenities	Rooms in this category feature Single rooms with shared ensuite, reverse cycle air-conditioning, built in storage, TV point, bedside cabinet and WIFI access.
Additional services at additional cost	N/A
Rooms offered on an extra services basis?	No

Room Information	Description	Room Size (m2)	Room Numbers	Price Category	Maximum Occupancy per Room
Streaky Bay Hospital	Single room Shared Ensuite	17	8 - 9	4	1



**COUNTRY  
HEALTH  
CONNECT**

Country Health Connect Eyre & Far North  
Midwest Health & Aged Care Inc – Streaky Bay MPS  
3 Flinders Drive, Streaky Bay SA 5680  
(08) 8626 1490  
Email: [Health.CHSA-AgedCareLiaisonOfficers@sa.gov.au](mailto:Health.CHSA-AgedCareLiaisonOfficers@sa.gov.au)

Room Type	Shared Room with Shared Ensuite
Refundable Accommodation Deposit (RAD)	\$280,000 (Price Category 4)
Daily Accommodation Payment (DAP)	\$62.67 per day
Explanation of payment options	<p>Residents can choose to pay for their accommodation by a Refundable Accommodation Deposit (RAD), a Daily Accommodation Payment (DAP) or a combination of both.</p> <p>A RAD is paid as a lump sum amount.</p> <p>A DAP accrues daily and is paid fortnightly.</p> <p>A combination payment includes both a partial lump sum and daily payments.</p>
Example of combination payment	<p>An example based on 50% RAD and 50% DAP would be:</p> <p>\$140,000 RAD plus an ongoing DAP of \$31.33 per day.</p>
Maximum Permissible Interest Rate (MPIR)	The current maximum permissible interest rate is 8.17% as at 1 April 2025.
Other Fees & Charges	All residents are required to pay a basic daily care fee.
Features and Amenities	Rooms in this category feature shared rooms with shared ensuite, reverse cycle air-conditioning, garden access, Television, wardrobes, bedside cabinet and WIFI access.
Additional services at additional cost	N/A
Rooms offered on an extra services basis?	No

Room Information	Description	Room Size (m2)	Room Numbers	Price Category	Maximum Occupancy per Room
Streaky Bay Hospital	Shared room Shared Ensuite	26	11, 12, 14	4	2



**COUNTRY  
HEALTH  
CONNECT**

Country Health Connect Eyre & Far North  
Midwest Health & Aged Care Inc – Streaky Bay MPS  
3 Flinders Drive, Streaky Bay SA 5680  
(08) 8626 1490  
Email: [Health.CHSA-AgedCareLiaisonOfficers@sa.gov.au](mailto:Health.CHSA-AgedCareLiaisonOfficers@sa.gov.au)

Room Type	Single Room with Shared Ensuite
Refundable Accommodation Deposit (RAD)	\$310,000.00 (Price Category 3)
Daily Accommodation Payment (DAP)	\$69.38 per day
Explanation of payment options	<p>Residents can choose to pay for their accommodation by a Refundable Accommodation Deposit (RAD), a Daily Accommodation Payment (DAP) or a combination of both.</p> <p>A RAD is paid as a lump sum amount.</p> <p>A DAP accrues daily and is paid fortnightly.</p> <p>A combination payment includes both a partial lump sum and daily payments.</p>
Example of combination payment	<p>An example based on 50% RAD and 50% DAP would be:</p> <p>\$155,000 RAD plus an ongoing DAP of \$34.69 per day.</p>
Maximum Permissible Interest Rate (MPIR)	The current maximum permissible interest rate is 8.17% as at 1 April 2025.
Other Fees & Charges	All residents are required to pay a basic daily care fee.
Features and Amenities	Rooms in this category feature Single rooms with shared ensuite, reverse cycle air-conditioning, garden access, TV point, wardrobes, bedside cabinet and WIFI access
Additional services at additional cost	N/A
Rooms offered on an extra services basis?	No

Room Information	Description	Room Size (m2)	Room Numbers	Price Category	Maximum Occupancy per Room
Streaky Bay Hospital	Single room Shared Ensuite	30	10	3	1



**COUNTRY  
HEALTH  
CONNECT**

Country Health Connect Eyre & Far North  
Midwest Health & Aged Care Inc – Streaky Bay MPS  
3 Flinders Drive, Streaky Bay SA 5680  
(08) 8626 1490  
Email: [Health.CHSA-AgedCareLiaisonOfficers@sa.gov.au](mailto:Health.CHSA-AgedCareLiaisonOfficers@sa.gov.au)

## Communal Areas

Streaky Bay MPS rooms have access to communal lounge and dining facilities, and a communal private room (family meetings, clergy) hairdressing salon, Activity room, kitchenette and courtyard access.

## Services

Permanent Care, Respite Care, Ageing in Place.

Streaky Bay MPS delivers high quality acute hospital care, residential aged care and community based services to residents across a wide catchment area.

Allied health (visiting), Social worker, Diversional therapist, Chaplain (visiting), Medicare, On-site access to GP, pharmacy, Incontinence products & toiletries (subject to legislated scheduled service), Entertainment, Mobile library, Electrical appliance testing, Postal service, gardening assistance, Transport bus/van,

Meals are prepared and cooked at the hospital daily and there is a rotating menu.

Streaky Bay is located close to the town's shopping and recreational facilities.

Co-located with the Hospital there is ready access to medical care.

Streaky Bay MPS is strongly supported by the local community and has strong links with local community organisations, churches and businesses.

24 hour support from a dedicated team of staff allows the service to offer ageing in place.

Our staff, volunteers and residents participate in community events.

## Location/Access

Situated in a residential area near the foreshore, with well maintained roads and footpaths.

Streaky Bay is a quiet country township and is surrounded by scenic rural areas and nearby beaches.

Streaky Bay MPS is a single level Residential Aged Care Facility, offering a home-like atmosphere in open plan accommodation for singles and couples with landscaped gardens and surrounds.

## Leisure & Well-Being

EFN LHN caters for residents from diverse cultural backgrounds and our Lifestyle Program is designed to celebrate this diversity. The Elmhaven Residence is strongly grounded in the community and has strong links with the community organisations, churches and businesses.

Our staff, volunteers and residents participate in community lunches, and other relevant events and promotions. Elmhaven residence promotes residents rights as an individual, and it is our philosophy to provide high quality care to each individual.

Most of our staff live in the local area and have been with us for many years, ensuring continuity of care. The staff take pride in providing compassionate and professional care.

## Rates

The quoted Room Price is per person

Rates quoted are valid for the period 1 April 2025 – 31 May 2025



**COUNTRY  
HEALTH  
CONNECT**

Country Health Connect Eyre & Far North  
Midwest Health & Aged Care Inc – Streaky Bay MPS  
3 Flinders Drive, Streaky Bay SA 5680  
(08) 8626 1490  
Email: [Health.CHSA-AgedCareLiaisonOfficers@sa.gov.au](mailto:Health.CHSA-AgedCareLiaisonOfficers@sa.gov.au)

