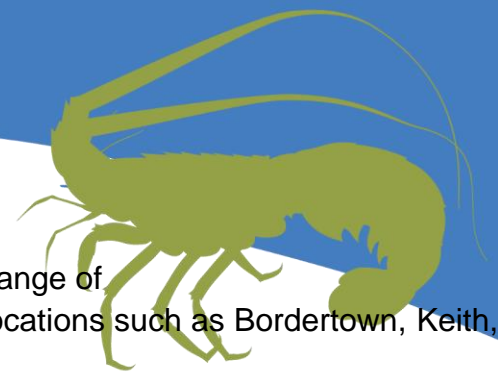
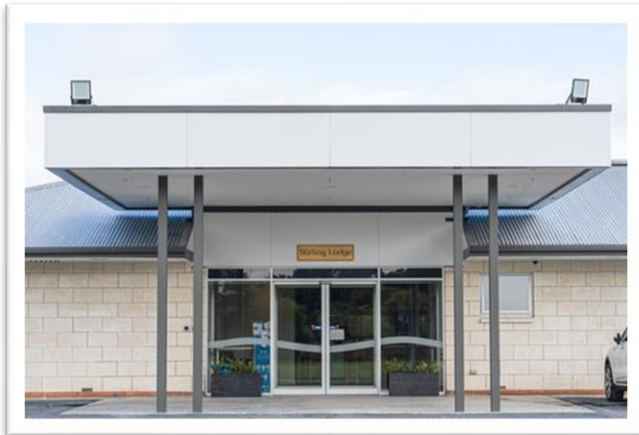


# Key Features Statement and Accommodation Pricing Keith and Districts Healthcare



Limestone Coast Local Health Network (LC LHN) provide a range of residential care services across regional South Australia in locations such as Bordertown, Keith, Kingston, Millicent, Naracoorte and Penola.

We are part of SA Health and provide high quality services that aim to enrich people's lives regardless of their health and support requirements, financial circumstances, or lifestyle preferences.



At Keith and Districts Healthcare we have a dedicated team who are compassionate, caring and highly professional individuals. Our staff members and volunteers play an integral role in the health and wellbeing of clients by providing companionship and support and encouraging independence. We know that maintaining the link between family, friends and the local community enriches the quality of life of our care recipients.

## Location / Access

Keith and Districts Healthcare (Stirling Lodge) is situated in a quiet residential area on Hill Ave, Keith and is co-located with Keith and District Healthcare, ensuring ready access to 24-hour medical care. It is located close to the towns shopping and recreational facilities.

Keith is a quiet country town at the entry of the Limestone Coast region of South Australia, approximately 226 kilometers from Adelaide on the Dukes Highway. All rooms have direct views on to gardens or open paddocks which is designed to enhance the experience of country living.

## Services

Permanent Care, Respite Care, Ageing in Place, Dementia Specific Care

Stirling Lodge is a 28-bed aged care facility, newly refurbished in April 2022. The aged care facility provides individualised care in a relaxed home environment with a tranquil rural outlook.

The intimate size of the facility enhances our ability to provide consumer-directed care and the opportunity to live a quality life with dignity and respect.

In addition to the comprehensive clinical care programs, Stirling Lodge offers scheduled visits by a General Practitioner, Physiotherapist and Podiatrist.

Meals are prepared and cooked onsite daily and there is a rotating menu.

A dedicated team of staff provide 24-hour nursing care. Staff take pride in providing compassionate and professional care.

## Extra Services

Keith and Districts Healthcare is not an extra service facility.

## Communal Areas

Stirling Lodge rooms have access to communal lounge / dining / activities facilities, additional reading nooks, hairdressing salon (additional charges apply) and communal courtyard and gardens. All areas of the facility are newly refurbished.

## Leisure and Well-Being

Stirling Lodge caters for residents from all backgrounds with a dedicated Leisure & Lifestyle Program which is designed to celebrate this diversity. Our adaptive and flexible program is also tailored to the needs of residents with dementia and other health issues. Our coordinator and volunteers regularly facilitate art and crafts, themed events, performances, and social outings.

Stirling Lodge encourages continued connection with the community and residents are able to continue hosting social events such as card playing or happy hours that they previously did in their home.

## Fees & Payments

Limestone Coast Local Health Network do not determine aged care fees. The standard fee is determined by the Department of Health with Services Australia (Centrelink) or Department of Veterans' Affairs being responsible for assessing individual fees that apply.

The Australian Government subsidises a range of aged care costs in Australia, but residents with the means must contribute to the cost of their care and accommodation. This may require one off lump-sum payment or deposit, as well as ongoing fees for your care, accommodation, and daily living expenses.

At Stirling Lodge, you may be required to pay one or more of the following residential care fees:

**A basic daily fee (standard fee)** – all residents are required to pay a basic daily care fee. The fee is indexed at 85% of a standard Aged Pension and changes on 20 March and 20 September each year when the pension is reviewed.

**Accommodation Payment** – not all residents pay an accommodation payment or contribution, only those that have assets above the asset fee threshold as detailed in the residential care fee schedule. Those residents assessed to pay an accommodation payment have three options for payment:

- i. Refundable Accommodation Deposit (RAD) – a lump sum refundable payment; or
- ii. Daily Accommodation Payment (DAP) – the daily equivalent you pay if you elect not to pay a RAD; or
- iii. Combination – a part RAD and part DAP. A combination example is noted on the fee schedule; however, a resident can choose the amount that suits their financial needs. The Aged Care Liaison Officer (ACLO) can assist in providing RAD/DAP payment scenarios.

Pages 4 – 5 provide an overview of the rooms available at Stirling Lodge and the applicable RAD

**Means Tested Care Fee (MTCF)** - This is an additional contribution towards the cost of care and not all people that move into aged care will be required to pay it. The Government will advise of this fee, if applicable, following the asset and income assessment. Annual and lifetime caps apply to means tested care fees.

**Payment of Fees** – the preferred method of payment is direct debit, and a direct debit request form (DDR) will be provided for completion.

The Aged Care Liaison Officer (ACLO) for Limestone Coast Local Health Network will work with each prospective resident and / or their nominated representative to provide an estimate of the fees and accommodation charges as well as provide the required documentation for permanency. The ACLO can be contacted on 8724 5209.

NB: Limestone Coast Local Health Network is not a financial advisor and therefore unable to provide financial planning advice. It is recommended you speak to your own financial advisor / seek independent financial advice prior to admission to aged care.

## Garden Wing – Single Room

Room Type	Single Room with Ensuite
Room Size	22 - 25 m <sup>2</sup>
Room Numbers	12 & 14 – 23
Refundable Accommodation Deposit (RAD)	\$350,000
Features and Amenities	Features of this single room include electronic high / low adjustable bed, bedside draws, chair, over-way table, reverse cycle air-conditioning, built in robes, TV, vinyl flooring.

\*\* size of rooms excludes ensuite

## Garden Wing – Shared Room

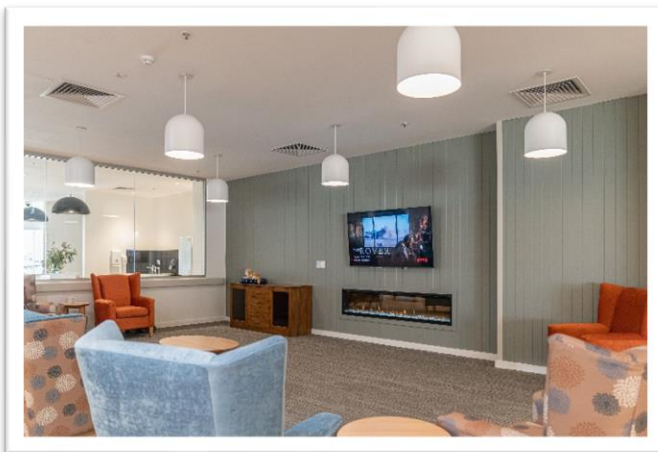
Room Type	Shared Room with Ensuite (shared)
Room Size	31 – 33 m <sup>2</sup>
Room Numbers	24 - 27
Refundable Accommodation Deposit (RAD)	\$300,000
Features and Amenities	Features of this shared room include electronic high / low adjustable bed, bedside draws, chair, over-way table, built in robes, for each person in the room) TV, reverse cycle air-conditioning, vinyl flooring.

\*\* size of rooms excludes ensuite

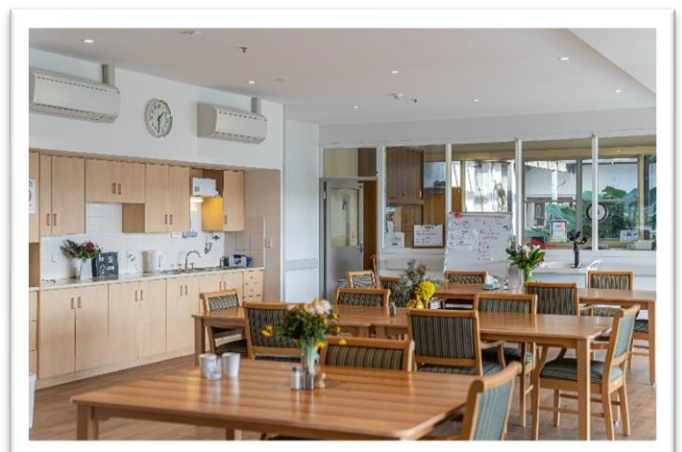
## Amherst Wing

Room Type	Single Room with Ensuite
Room Size	22 - 25 m <sup>2</sup>
Room Numbers	1 – 11 & 28
Refundable Accommodation Deposit (RAD)	\$350,000
Features and Amenities	Features of this single room include electronic high / low adjustable bed, bedside draws, chair, over-way table, reverse cycle air-conditioning, built in robes, TV, vinyl flooring.

\*\* size of rooms excludes ensuite



Stirling Lodge Communal Loungeroom



Stirling Lodge Resident Dining Room

### For more information

Limestone Coast Local Health Network

Keith and Districts Healthcare

35 Hill Ave

KEITH SA 5267

Telephone: (08) 8755 1555

[sahealth.sa.gov.au/limestonecoastlhn](http://sahealth.sa.gov.au/limestonecoastlhn)

 Follow us at: [facebook.com/LimestoneCoastLHN](https://facebook.com/LimestoneCoastLHN)



# Residential Aged Care Fee Schedule

## Basic Daily Fee (including respite) – effective 20 March 2025

The maximum basic daily fee for residents entering aged care (including respite) is \$63.82 per day

## Accommodation Payment – effective 1 April 2025 – 30 June 2025

Refundable Accommodation Deposit (RAD)	Daily Accommodation Payment (DAP)	Combination Payment Example RAD 50%	Combination Payment Example DAP 50%
\$380,000	\$85.05	\$190,000	\$42.52
\$350,000	\$78.34	\$175,000	\$39.17
\$310,000	\$69.38	\$155,000	\$34.69
\$300,000	\$67.15	\$150,000	\$33.57
\$280,000	\$62.67	\$140,000	\$31.33

## Maximum Permissible Interest Rate (MPIR) – effective 1 April 2025

The current MPIR is 8.17%

## Asset Thresholds

Asset Threshold	Rate
Asset Free Threshold	\$61,500
First Asset Threshold	\$206,039.20

## Means Tested Care Fee Caps

Cap	Rate
Annual	\$34,311.23
Lifetime	\$82,347.13

## For more information

Limestone Coast Local Health Network

Aged Care Liaison Officer

3 / 5-7 James Street

MOUNT GAMBIER SA 5290

Telephone: (08) 8724 5209

[sahealth.sa.gov.au/limestonecoastlhn](https://sahealth.sa.gov.au/limestonecoastlhn)

 Follow us at: [facebook.com/LimestoneCoastLHN](https://facebook.com/LimestoneCoastLHN)

OFFICIAL

© Limestone Coast Local Health Network, Government of South Australia.  
All rights reserved.

