

Country Health Connect

Key Features Statement

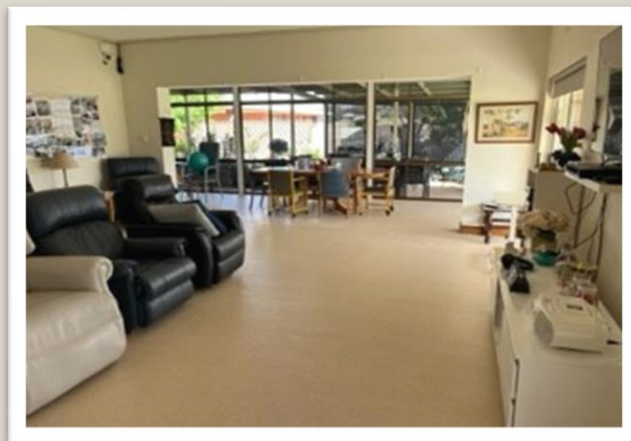
Eastern Eyre Kimba Multipurpose Service (MPS)

Eyre and Far North Local Health Network Inc

Eyre and Far North Local Health Network (EFN LHN) provides a range of residential care services under the brand of Country Health Connect. We are part of SA Health and provide a range of high quality services that aim to enrich people's lives regardless of their health and support requirements, financial circumstances or lifestyle preferences.

At Kimba MPS, we have a dedicated team who are compassionate, caring and highly professional individuals. Our staff members and volunteers play an integral role in the health and wellbeing of clients by providing companionship and support and encouraging independence. We know that maintaining the link between family, friends and the local community enriches the quality of life of our care recipients.

Our goal is to provide quality care that celebrates a sense of self, family and community. EFN LHN has aged care facilities across regional South Australia located in – Ceduna, Cleve, Coober Pedy, Cowell, Cummins, Elliston, Kimba, Streaky Bay, Tumby Bay and Wudinna.



**COUNTRY
HEALTH
CONNECT**

Country Health Connect Eyre & Far North
Eastern Eyre Kimba MPS
Martin Tce, Kimba SA 5641
(08) 8627 2400
Email: Health.CHSA-AgedCareLiaisonOfficers@sa.gov.au

Room Type	Single Room with Private Ensuite
Refundable Accommodation Deposit (RAD)	\$310,000 (Price Category 3)
Daily Accommodation Payment (DAP)	\$71.17 per day
Explanation of payment options	Residents can choose to pay for their accommodation by a Refundable Accommodation Deposit (RAD), a Daily Accommodation Payment (DAP) or a combination of both. A RAD is paid as a lump sum amount. A DAP accrues daily and is paid fortnightly. A combination payment includes both a partial lump sum and daily payments.
Example of combination payment	An example based on 50% RAD and 50% DAP would be: \$155,000 RAD plus an ongoing DAP of \$35.58 per day.
Maximum Permissible Interest Rate (MPIR)	The current maximum permissible interest rate is 8.38% as at 1 October 2024.
Other Fees & Charges	All residents are required to pay a basic daily care fee.
Features and Amenities	Rooms in this category feature single rooms with ensuites, reverse cycle air-conditioning, built in storage, bedside cabinet, telephone point,
Additional services at additional cost	N/A
Rooms offered on an extra services basis?	No

Room Information	Description	Room Size (m2)	Room Numbers	Price Category	Maximum Occupancy per Room
Pioneer Memorial Hostel	> Single room	15 - 17	1 – 10	3	1
	> Ensuite	17 - 19	11	3	1
Kimba Hospital Aged Care room	> Single Room	17 – 19	10	3	1
	> Ensuite				



Room Type	Single Room with Private Ensuite
Refundable Accommodation Deposit (RAD)	\$280,000 (Price Category 4)
Daily Accommodation Payment (DAP)	\$64.28 per day
Explanation of payment options	Residents can choose to pay for their accommodation by a Refundable Accommodation Deposit (RAD), a Daily Accommodation Payment (DAP) or a combination of both. A RAD is paid as a lump sum amount. A DAP accrues daily and is paid fortnightly. A combination payment includes both a partial lump sum and daily payments.
Example of combination payment	An example based on 50% RAD and 50% DAP would be: \$140,000 RAD plus an ongoing DAP of \$32.14 per day.
Maximum Permissible Interest Rate (MPIR)	The current maximum permissible interest rate is 8.38% as at 1 October 2024.
Other Fees & Charges	All residents are required to pay a basic daily care fee.
Features and Amenities	Rooms in this category feature Shared rooms, reverse cycle air-conditioning, built in storage, Television, and are suitable for couples
Additional services at additional cost	N/A
Rooms offered on an extra services basis?	No

Room Information	Description	Room Size (m2)	Room Numbers	Price Category	Maximum Occupancy per Room
Kimba Hospital Aged Care room	> Single room > Shared Ensuite	15 - 17	6	4	2
Kimba Hospital Aged Care room	> Shared room > Shared Ensuite	21 - 23	7 - 9	4	4



Communal Areas

Kimba MPS rooms have access to communal lounge and dining facilities, Verandah areas, BBQ area and hairdressing salon and communal courtyard and gardens.

Services

Permanent Care, Respite Care, Ageing in Place.

Kimba MPS delivers high quality acute hospital care, residential aged care and community based services to residents across a wide catchment area.

In addition to our comprehensive clinical care programs, we offer Healthy Ageing programs, recovery pathways to maintenance of independence and achieving personal goals. Allied health (visiting), Social worker, Diversional therapist, Chaplain (visiting), Oral hygiene check-ups (external), Medicare, On-site access to GP, pharmacy, Incontinence products & toiletries (subject to legislated scheduled service), Entertainment, Electrical appliance testing, Postal service, Transport bus/van, Council Community bus access, Arrangements for room telephone connections. The Kimba Hospital provides high care service with a secure wing specifically designed for dementia clients

Meals are prepared and cooked onsite daily and there is a rotating menu.

Kimba MPS is located within 1 kilometre to the town's shopping and recreational facilities.

Co-located to the Hospital there is ready access to medical care.

Kimba MPS is strongly supported by the local community and has strong links with local community organisations, churches and businesses.

24 hour support from a dedicated team of staff allows the service to offer ageing in place.

Our staff, volunteers and residents participate in community events.

Most of our staff live in the local area and have been with us for many years, ensuring continuity of care. The staff take pride in providing compassionate and professional care.

Location/Access

Situated in a residential area on main road, well maintained roads and footpaths.

Kimba MPS is a single level Residential Aged Care Facility, offering a home-like atmosphere in open plan accommodation for singles and couples with landscaped gardens and surrounds.

Leisure & Well-Being

EFN LHN caters for residents from diverse cultural backgrounds and our Lifestyle Program is designed to celebrate this diversity. Our adaptive and flexible program is also tailored to the needs of residents with dementia and other health issues.

We have a number of groups that come to the Hostel and provide entertainment and activities for the residents such as Sing Australia and Day Centre

Clergy from Kimba and surrounding districts take it in turn to offer services to the residents at the hostel. The hostel also hosts events for the Melbourne Cup and Biggest Morning Tea.

Rates

The quoted Room Price is per person

Rates quoted are valid for the period 1 October 2024 – 31 December 2024



**COUNTRY
HEALTH
CONNECT**

Country Health Connect Eyre & Far North
Eastern Eyre Kimba MPS
Martin Tce, Cleve SA 5640
(08) 8627 2400
Email: Health.CHSA-AgedCareLiaisonOfficers@sa.gov.au



Government
of South Australia

SA Health