

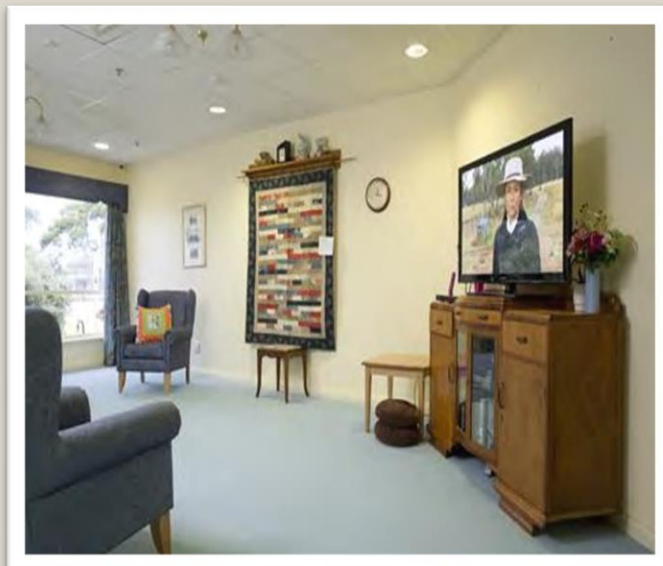
Country Health Connect Key Features Statement Cummins Multipurpose Service (MPS)

Eyre and Far North Local Health Network Inc

Eyre and Far North Local Health Network (EFN LHN) provides a range of residential care services under the brand of Country Health Connect. We are part of SA Health and provide a range of high quality services that aim to enrich people's lives regardless of their health and support requirements, financial circumstances or lifestyle preferences.

At Cummins MPS, we have a dedicated team who are compassionate, caring and highly professional individuals. Our staff members and volunteers play an integral role in the health and wellbeing of residents by providing companionship and support and encouraging independence. We know that maintaining the link between family, friends and the local community enriches the quality of life of our care recipients.

Our goal is to provide quality care that celebrates a sense of self, family and community. EFN LHN, has aged care facilities across regional South Australia located in – Ceduna, Cleve, Coober Pedy, Cowell, Cummins, Elliston, Kimba, Streaky Bay, Tumby Bay and Wudinna.



**COUNTRY
HEALTH
CONNECT**

Country Health Connect Eyre & Far North
Tumby Bay MPS
The Esplanade, Tumby Bay SA 5605
(08) 8688 2107
Email: Health.CHSA-AgedCareLiaisonOfficers@sa.gov.au

Room Type		Single Room with Private Ensuite			
Refundable Accommodation Deposit (RAD)		\$350,000 (Price Category 2)			
Daily Accommodation Payment (DAP)		\$80.16 per day			
Explanation of payment options		<p>Residents can choose to pay for their accommodation by a Refundable Accommodation Deposit (RAD), a Daily Accommodation Payment (DAP) or a combination of both.</p> <p>A RAD is paid as a lump sum amount.</p> <p>A DAP accrues daily and is paid fortnightly.</p> <p>A combination payment includes both a partial lump sum and daily payments.</p>			
Example of combination payment		<p>An example based on 50% RAD and 50% DAP would be:</p> <p>\$175,000 RAD plus an ongoing DAP of \$40.08 per day.</p>			
Maximum Permissible Interest Rate (MPIR)		The current maximum permissible interest rate is 8.36% as at 1 July 2024.			
Other Fees & Charges		All residents are required to pay a basic daily care fee.			
Features and Amenities		Rooms in this category feature single rooms with ensuites, reverse cycle air-conditioning, built in storage, telephone point.			
Additional services at additional cost		N/A			
Rooms offered on an extra services basis?		No			
Room Information	Description	Room Size (m2)	Room Numbers	Price Category	Maximum Occupancy per Room
Cummins Hospital Aged Care Wing	<ul style="list-style-type: none"> > Single room > Ensuite 	13 - 15	3 -5, 7	2	1



**COUNTRY
HEALTH
CONNECT**

Country Health Connect Eyre & Far North
Cummins MPS
Tumby Bay Road, Cummins SA 5631
(08) 8676 0211
Email: Health.CHSA-AgedCareLiaisonOfficers@sa.gov.au

Room Type		Share Room with Private Ensuite			
Refundable Accommodation Deposit (RAD)		\$310,000 (Price Category 3)			
Daily Accommodation Payment (DAP)		\$71.00 per day			
Explanation of payment options		<p>Residents can choose to pay for their accommodation by a Refundable Accommodation Deposit (RAD), a Daily Accommodation Payment (DAP) or a combination of both.</p> <p>A RAD is paid as a lump sum amount.</p> <p>A DAP accrues daily and is paid fortnightly.</p> <p>A combination payment includes both a partial lump sum and daily payments.</p>			
Example of combination payment		<p>An example based on 50% RAD and 50% DAP would be:</p> <p>\$155,000 RAD plus an ongoing DAP of \$35.50 per day.</p>			
Maximum Permissible Interest Rate (MPIR)		The current maximum permissible interest rate is 8.36% as at 1 July 2024.			
Other Fees & Charges		All residents are required to pay a basic daily care fee.			
Features and Amenities		Rooms in this category feature a shared room with ensuite, reverse cycle air-conditioning, built in storage, telephone point.			
Additional services at additional cost		N/A			
Rooms offered on an extra services basis?		No			
Room Information	Description	Room Size (m2)	Room Numbers	Price Category	Maximum Occupancy per Room
Miroma Place Hostel	> Single Room	13 – 15	1 – 10	3	1
	> Ensuite	15 - 17	11 - 14	3	1
Cummins Hospital Aged Care Rooms	> Single Room	13 – 15	1	3	1
	> Shared Ensuite	14 - 15	2	3	1
Cummins Hospital Aged Care Room	> Shared Room > Ensuite	25 - 27	6	3	2



**COUNTRY
HEALTH
CONNECT**

Country Health Connect Eyre & Far North
Cummins MPS
Tumby Bay Road, Cummins SA 5631
(08) 8676 0211
Email: Health.CHSA-AgedCareLiaisonOfficers@sa.gov.au

Communal Areas

Miroma Place Hostel rooms have access to communal lounge and dining facilities, and communal courtyard and gardens. The Cummins Hospital Aged care rooms have access to communal lounge and dining facilities and are in above average condition

Services

Permanent Care, Respite Care, Ageing in Place.

Cummins MPS delivers high quality acute hospital care, residential aged care and community based services to residents across a wide catchment area.

In addition to our comprehensive clinical care programs, we offer allied health, Social worker, Chaplain visits, Oral hygiene check-ups, Medicare, On-site access to GP, pharmacy, Incontinence products & toiletries (subject to legislated scheduled service), entertainment, volunteer program, Mobile library, Electrical appliance testing, Postal service, Gardening assistance, Arrangements for room telephone connections. Meals are prepared and cooked onsite daily and there is a rotating menu.

Cummins MPS is located approximately 1 km to the town's shopping and recreational facilities.

Co-located with the Hospital there is ready access to medical care.

Cummins MPS is strongly supported by the local community and has strong links with local community organisations, churches and businesses.

24 hour support from a dedicated team of staff allows the service to offer ageing in place.

Our staff, volunteers and residents participate in community events.

Most of our staff live in the local area and have been with us for many years, ensuring continuity of care. The staff take pride in providing compassionate and professional care.

Location/Access

Situated in a residential area on main road, well maintained roads and footpaths.

Cummins is a quiet country township and is surrounded by scenic rural areas.

Cummins MPS is a single level Residential Aged Care Facility, offering a home-like atmosphere in open plan accommodation for singles and couples with landscaped gardens and surrounds.

Leisure & Well-Being

EFN LHN caters for residents from diverse cultural backgrounds and our Lifestyle Program is designed to celebrate this diversity. Our adaptive and flexible program is also tailored to the needs of residents with dementia and other health issues.

Residents are encouraged to maintain community links and are assisted to attend offsite meetings with groups such as Lions and Senior Citizens. As part of our intergenerational program, local schools and kindergartens celebrate events with residents.

Rates

The quoted Room Price is per person

Rates quoted are valid for the period 1 July 2024 – 30 September 2024



**COUNTRY
HEALTH
CONNECT**

Country Health Connect Eyre & Far North
Cummins MPS
Tumby Bay Road, Cummins SA 5631
(08) 8676 0211
Email: Health.CHSA-AgedCareLiaisonOfficers@sa.gov.au



Government
of South Australia
SA Health